



# Hardwick Community Planning Forum Town of Hardwick, Vermont

Heather Carrington, CCDS, LLC

March 3, 2022

\*This project is funded by the Bylaw Modernization Grant Program administered by the Vermont Department of Housing and Community Development.\*

# •AGENDA•

6:00 p.m. Introductions: Zoning Administrator, Project Consultant

6:05 p.m. Review the Agenda

6:10 p.m. Project Overview: Project goals, funding source, geography and included districts

6:15 p.m. Overview of Vermont HOME Act (Act 047)

6:30 p.m. Hardwick Community Housing Plans and Needs

- Municipal Plan (2019) Housing Goals
- Hardwick Housing Stock
- Gaps in Hardwick Housing Availability

6:45 p.m. Types of Bylaw Changes Under Discussion and Consideration by the Planning Commission

7:00 p.m. Facilitated Community Discussion and Public Input

7:45 p.m. Next Steps and Future Opportunities for Community Input

8:00 p.m. Adjourn



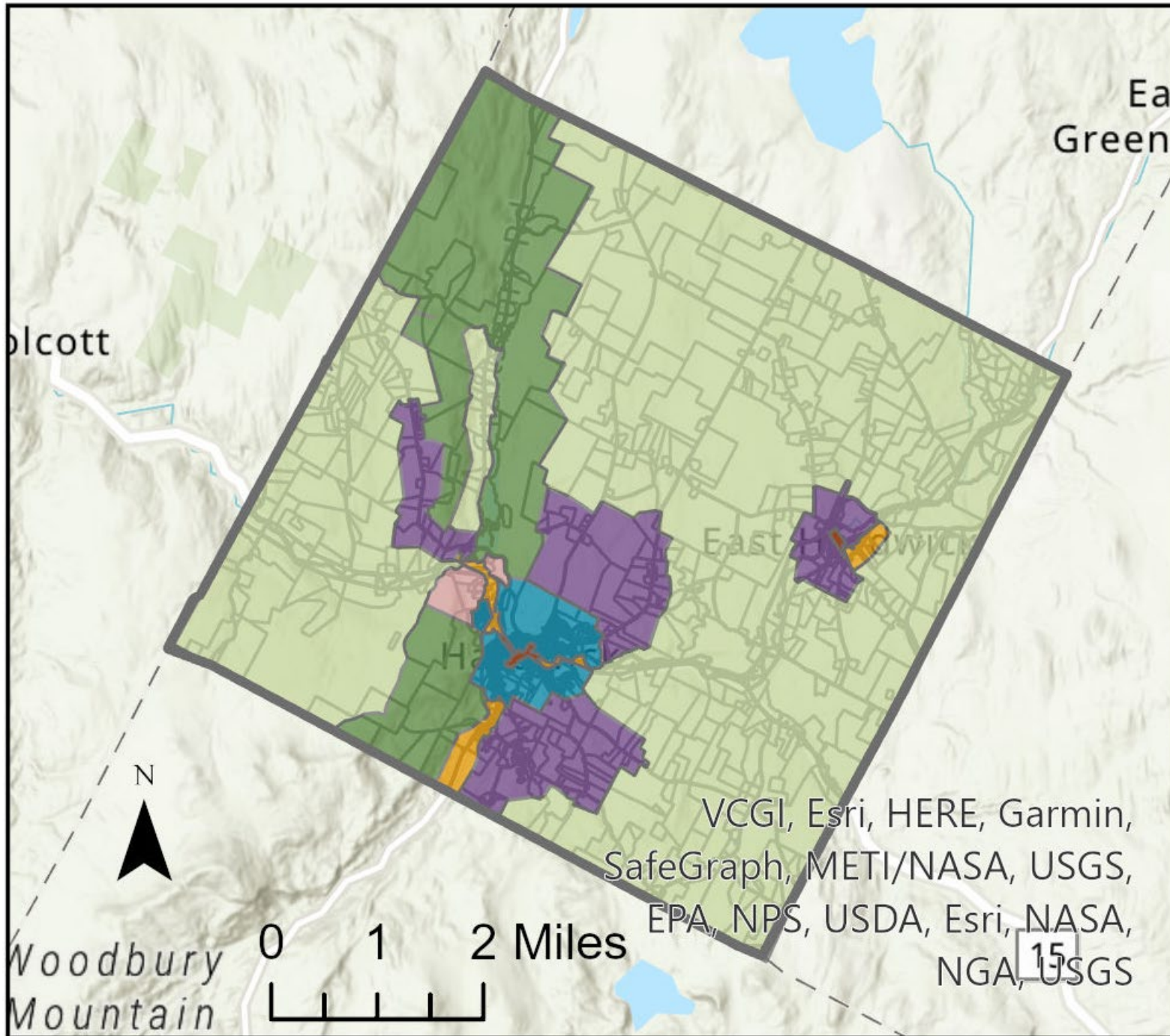
## **Bylaw Modernization**

### **Project Goals:**

The Bylaw Modernization Project will review the Town's unified development bylaws and draft amendments. Those amendments will:

- reflect "smart growth" principles
- support the creation of additional housing options
- Target housing development in Hardwick's Designated Downtown, and in the Designated Village Center of East Hardwick.

# Project Overview: Hardwick Zoning



## Hardwick Zoning Districts

### DISTRICT

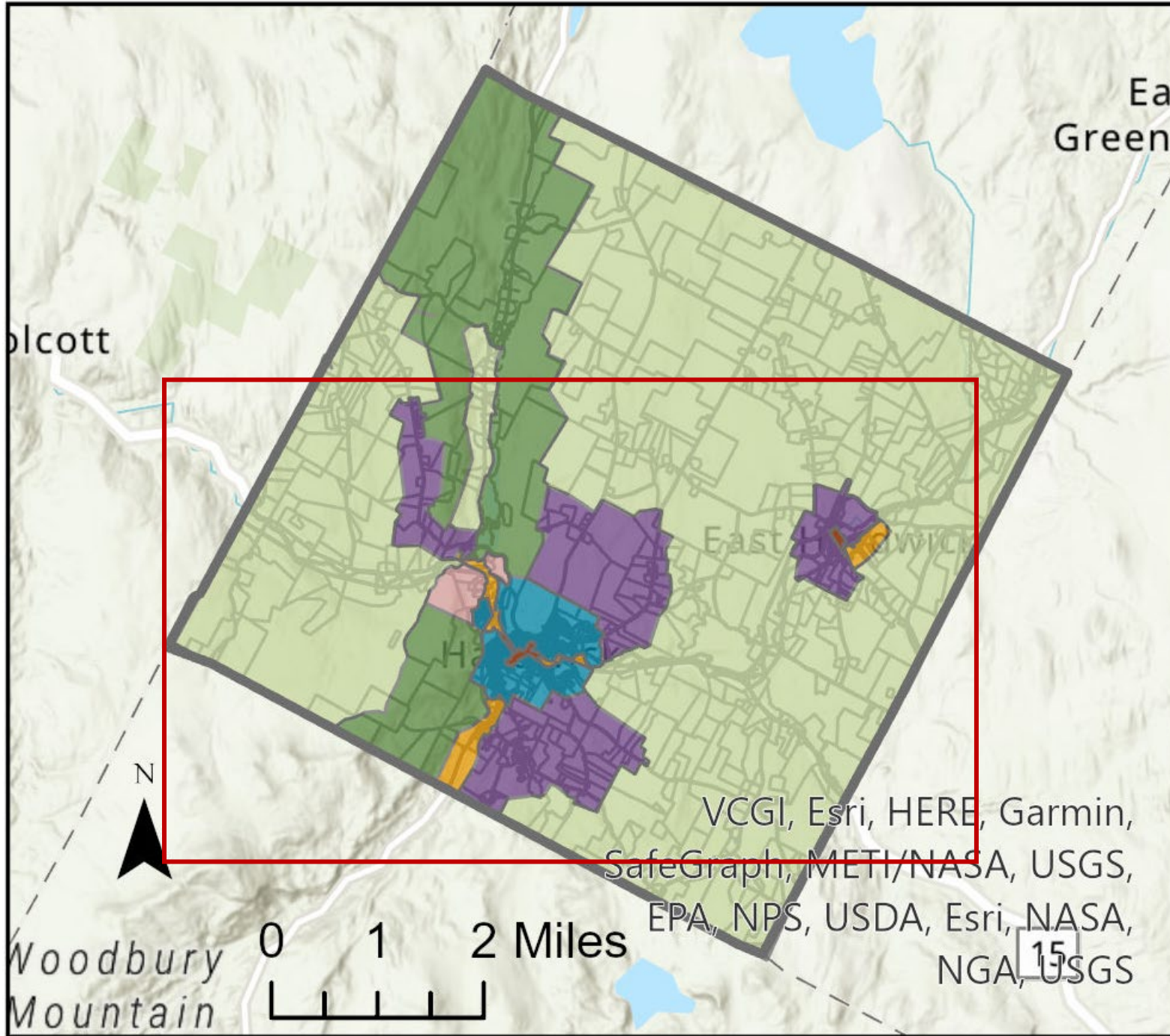
- Central Business
- Compact Residential
- Forest Reserve
- Highway Mixed-Use
- Industrial
- Rural Residential
- Village Neighborhood

- Parcel Boundaries
- Hardwick Town Boundary

Hardwick has 7 zoning districts covering 39 square miles.

VCGL, Esri, HERE, Garmin, SafeGraph, METI/NASA, USGS, EPA, NPS, USDA, Esri, NASA, NGA, USGS

# Project Overview: Project Area Geography

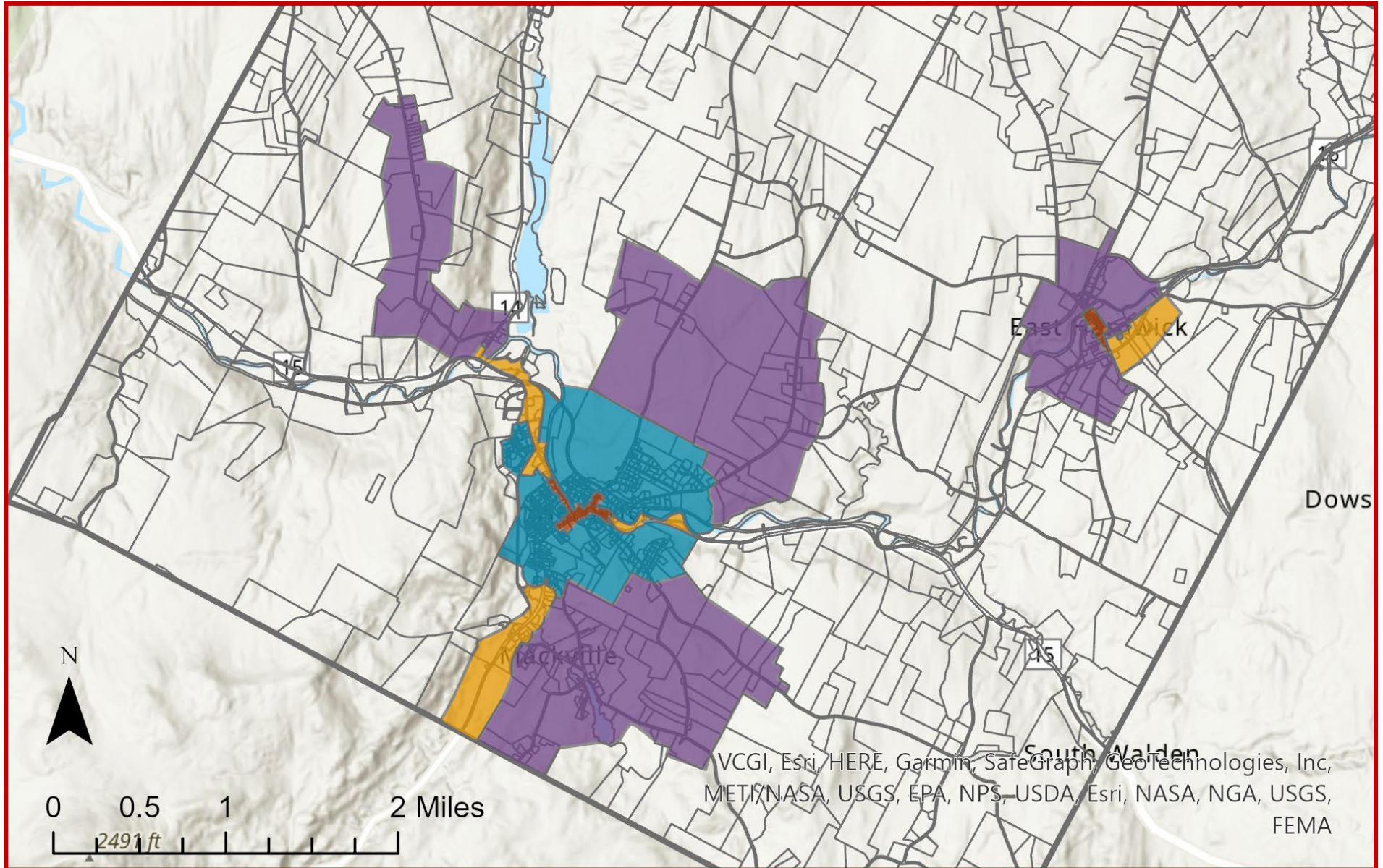


## Hardwick Zoning Districts

- DISTRICT
- Central Business
  - Compact Residential
  - Forest Reserve
  - Highway Mixed-Use
  - Industrial
  - Rural Residential
  - Village Neighborhood
- Parcel Boundaries
- Hardwick Town Boundary

VCGL, Esri, HERE, Garmin,  
SafeGraph, METI/NASA, USGS,  
EPA, NPS, USDA, Esri, NASA,  
NGA, USGS

# Project Overview: Project Area Zoning Districts



- Central Business
- Compact Residential
- Highway Mixed-Use
- Village Neighborhood

The project area includes 4 of Hardwick's 7 zoning districts and covers approximately 6.5 square miles of Hardwick's total 39 square miles.

## Vermont HOME Act (Act 047)

Enacted on June 5<sup>th</sup>, 2023, the HOME Act contains municipal zoning reforms for residential districts served by municipal water and sewer.

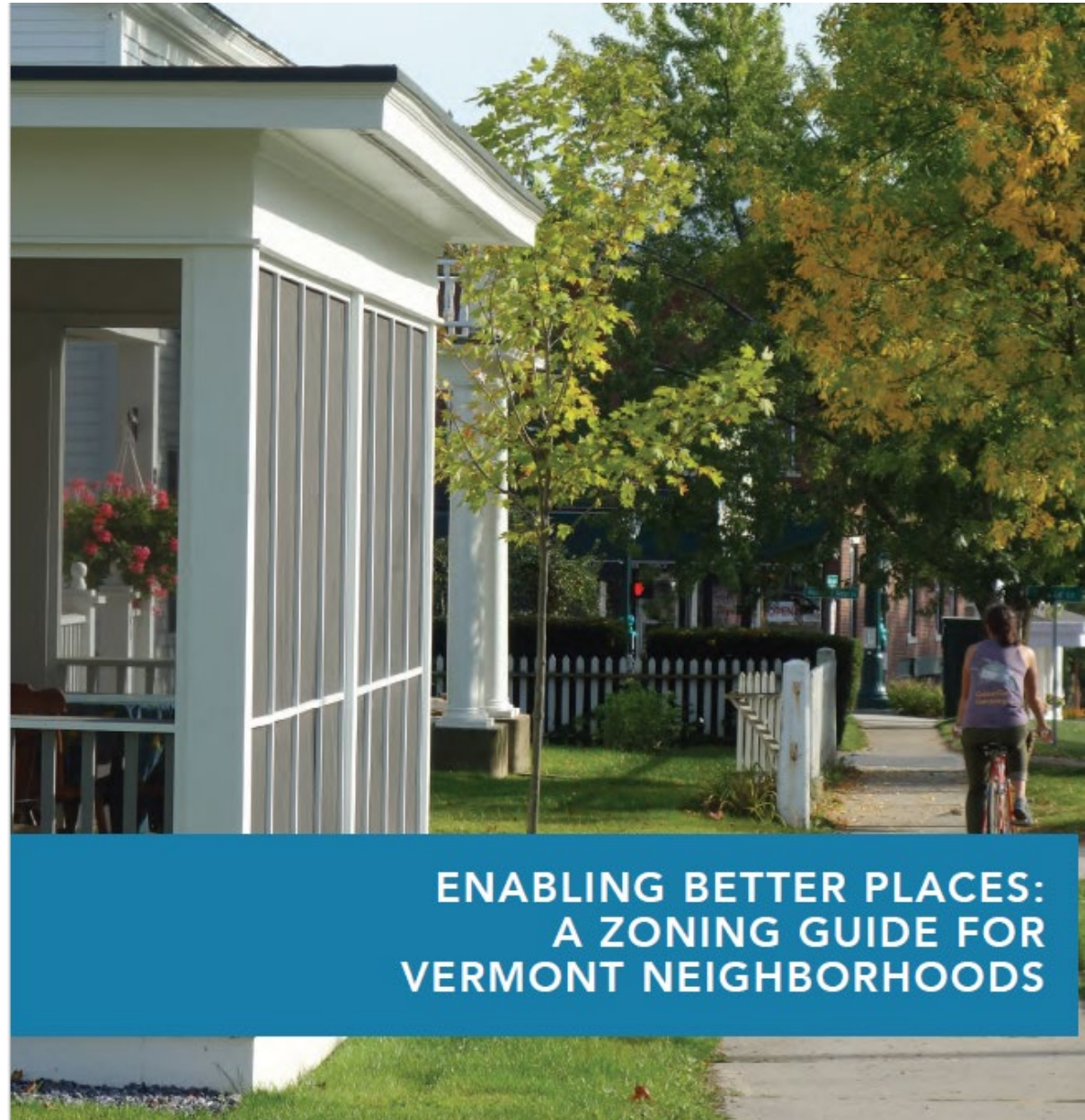
Specific to municipal regulations, the HOME Act:

- Limits number of parking spaces that municipalities can require per residential unit.
- Requires that multi-family buildings are allowable uses in districts where residential is an allowable use.
- Sets building and lot standards for residential units.
- Establishes emergency shelters as a protected public use and places limits on what municipal bylaws can regulate in relation to shelters.
- Allows a 40% density bonus and 1-floor building height bonus for affordable housing development.



## 6 Key Topics for Reform

1. Dimensional Requirements
2. Parking Standards
3. Allowable Uses
4. Street Standards
5. Accessory Dwelling Units
6. Development Review Process



Full document can be accessed online at:  
<https://accd.vermont.gov/content/zoning-for-great-neighborhoods>





Hardwick  
Municipal  
Plan  
Housing  
Goals

## Goals, Policies & Recommendations

### GOAL

- For Hardwick to have safe and affordable housing available in a variety of types for all incomes, ages, and for those with special needs.

### POLICIES

- Multifamily housing is encouraged in our village centers.
- Affordable housing should minimize long-term living costs through high quality design, efficient construction, energy efficiency, and proximity to employment.
- Hardwick supports efforts to assist elderly and disabled residents who wish to remain in their homes, and community-based health care systems that enable elderly and disabled people to remain in the community.

# Hardwick Community Housing Profile



## Households

Vermont  
262,514

Hardwick  
1,224



## Homeless individuals (One Night Count, 2022)

Vermont  
2,780

County  
139



## Median household income

Vermont  
\$67,674

Hardwick  
\$61,116

# Hardwick Community Housing Profile

## Median primary home sale price

Vermont  
\$309,000  
Hardwick  
\$180,000

## Median year homes built

Vermont  
1975  
Hardwick  
1963

## Median gross rent



Vermont  
\$1,070  
Hardwick  
\$647

## Rental vacancy rate



# Hardwick Community Housing Profile

% of households paying more than 50% of income towards housing expenses

Vermont

14%

Hardwick

2%



Median household income of town's residents as percentage of countywide median

Hardwick

110%

% of town's workforce that live in a different town



Hardwick  
73%

Average annual increase in households



Vermont  
0.60%

Hardwick  
0.27%

## Hardwick Housing Gaps

**Missing Middle** – affordable housing options for households earning 80%-120% of area median income.

**Variety of housing types** – 76% of homes in Hardwick are single family dwellings. There is a gap in single family attached homes (townhouses, row houses) and there are fewer 2, 3 and 4 family dwellings than the state average.

**Newer Homes** – 57% of Hardwick's housing stock was constructed prior to 1970. Newer homes can help with affordability, durability, health and safety. Hardwick's housing stock is substantially older than housing in the state as a whole.

**Smaller bedroom counts** – 63% of homes in Hardwick have 3 or more bedrooms, while 68% of households are comprised of 2 or fewer people. This mismatch can make housing less affordable.

# Bylaw Amendments Under Consideration

## 6 Key Topics for Reform

### 1. Dimensional Requirements

- *Match minimum lot size requirement to local patterns.*
- *Reduce density cap requirements.*

### 2. Parking Standards

- *Require no more than 1 parking space per dwelling unit.*

### 3. Allowable Uses

- *Allow residential uses “by-right” including multifamily dwellings (at least up to 4 units).*

### 4. Street Standards

- *Where feasible, implement complete streets to support pedestrian and cyclist connectivity.*

### 5. Accessory Dwelling Units (ADUs)

- *Hardwick already allows ADUs in all districts being considered.*

### 6. Development Review Process

- *Reduce requirements for conditional-use approval and site plan review and simplify application process.*

## **Next Steps and Engagement Opportunities:**

### **Fall 2023**

- Continued Planning Commission discussion of potential bylaw amendments (open to the public)
- Community Forum #2 (Date TBD)

### **April 1, 2024**

Draft bylaw amendments submitted to Planning Commission

### **May and June 2024**

Planning Commission Public Hearings on draft bylaw amendments

### **September and October 2024**

Select Board Public Hearings on draft bylaw amendments

### **December 1, 2024**

Project Complete